

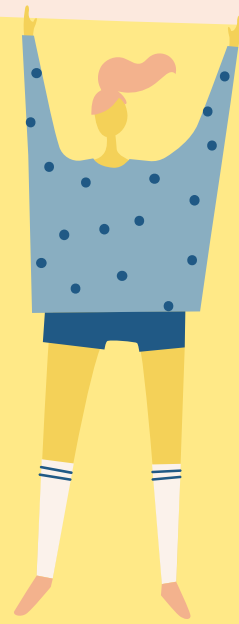


A day in the life of a

RELATIONSHIP CENTERED CARE COORDINATOR



Meet with team members to offer direction, support, coaching and mentoring to embed a high standard of RCC Care Modeling.



Ongoingly design, implement and maintain the Education and Development programs for the RCC model of care, for all disciplines.



Meeting with team members to identify any areas of concern in regard to relationships on the household and/or across all departments within Nightingale Hammerson.



Engage with Residents, Relatives and Team members in a holistic manner modeling and applying exceptional Relationship Centered Care



Lead the RCC Champions project at Nightingale Hammerson



Guide and advise the Dementia Care Mappers to ensure the implementation of the DCM strategy across the home.

